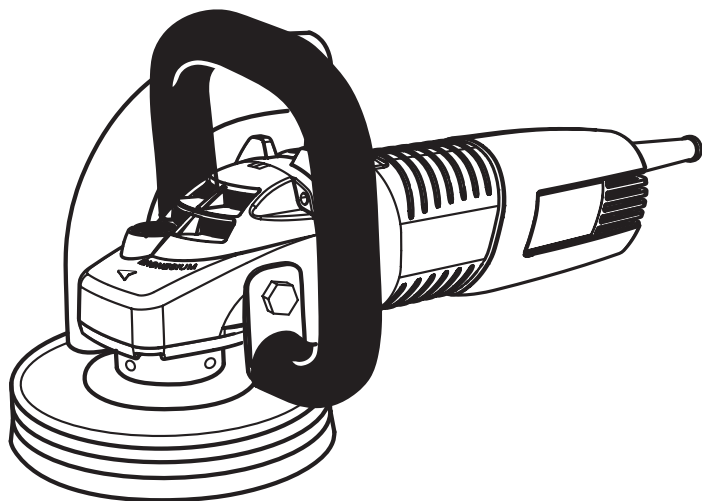
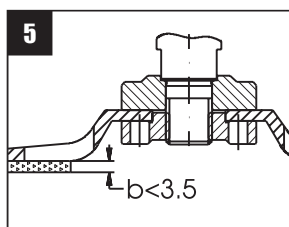
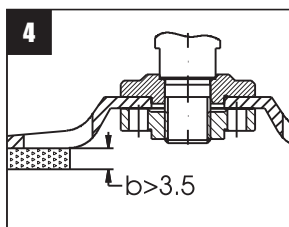
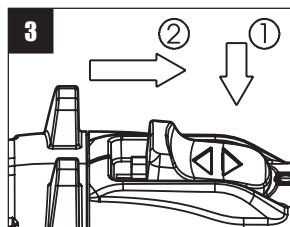
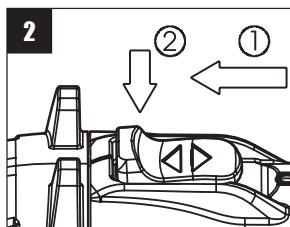
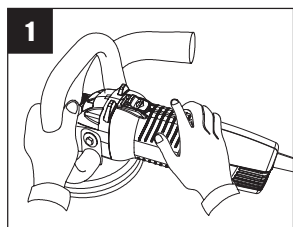
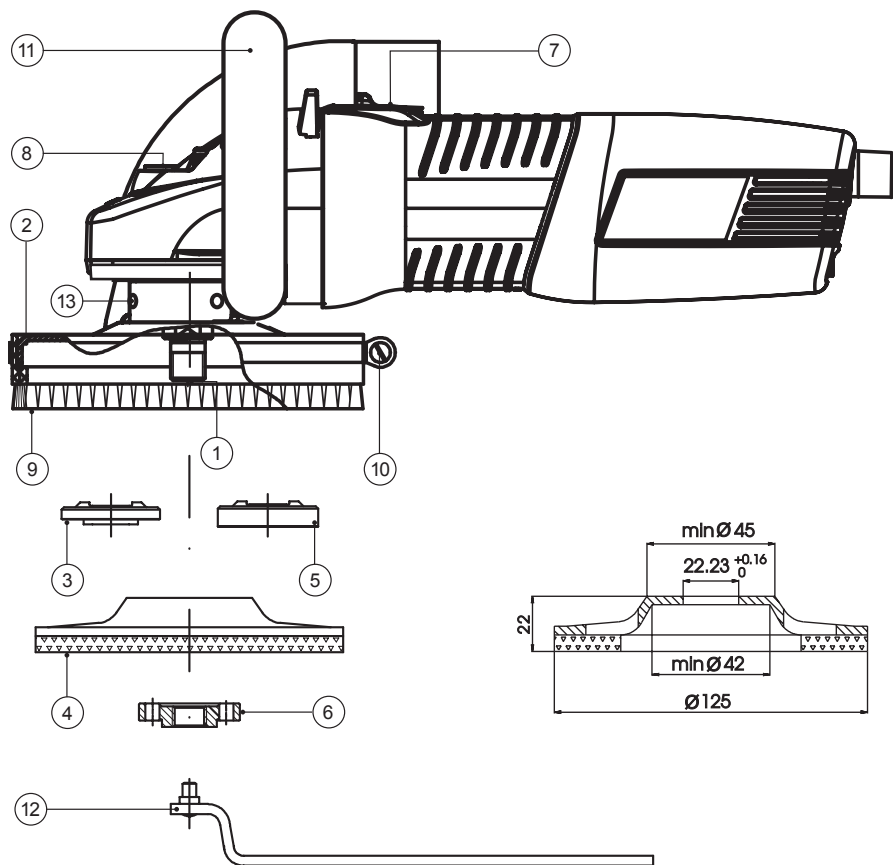




CONCRETE GRINDER

Original instructions





Contents

Introduction	3
Technical specifications	5
General power tool safety warnings.....	6
Concrete grinder safety warnings	7
Know your product	7
Operation.....	7
Maintenance	9

UNPACKING

Due to modern mass production techniques, it is unlikely that your power tool is faulty or that a part is missing. If you find anything wrong, do not operate the tool until the parts have been replaced or the fault has been rectified. Failure to do so could result in serious personal injury.

ASSEMBLY

The concrete grinder is packed fully assembled except for the diamond cup wheel.

Introduction

Your new TRELAWNY power tool will more than satisfy your expectations. It has been manufactured under stringent TRELAWNY Quality Standards to meet superior performance criteria. You will find your new tool easy and safe to operate, and, with proper care, it will give you many years of dependable service.



WARNING:

Carefully read through these original instructions before using your new TRELAWNY power tool. Take special care to heed the **Warnings**. Your TRELAWNY power tool has many features that will make your job faster and easier. Safety, performance, and dependability have been given top priority in the development of this tool, making it easy to maintain and operate.



Do not dispose of electrical products together with household waste!

Waste electrical products should not be disposed of with household waste. Please recycle where facilities exist. Check with your local authority or retailer for recycling advice.



ENVIRONMENTAL PROTECTION

The machine, accessories and packaging should be sorted for environmental-friendly recycling.
The plastic components are labelled for categorised recycling.

DESCRIPTION OF SYMBOLS

The rating plate on your tool may show symbols. These represent important information about the product or instructions on its use.



Double insulated for additional protection



Spindle thread: M14



Conforms to the relevant European Directives




Refer to original instructions

YYYY-Www

Production period, where the variable symbols are:
YYYY - year of manufacture, **ww** - calendar week number

Technical specifications

Model	TCG 125L	TCG 125
Part Number	540.2010	540.2020
Voltage	110V~50Hz	230V~50Hz
Power input	1010 W	1400 W
No load speed	8000 min ⁻¹	10500 min ⁻¹
Spindle thread	M14	M14
Spindle thread length	20 mm	20 mm
Cup wheel arbor	Ø22.23 mm	Ø22.23 mm
Cup wheel maximum diameter	125 mm	125 mm
New cup wheel maximum thickness	22 mm	22 mm
Dust extraction port diameter	Ø35 mm	Ø35 mm
Overall dimensions - Length / Width / Height	325/190/200 mm	325/190/200 mm
Weight (EPTA Procedure 01/2003)	3.1 kg	3.1 kg
Safety class (EN 60745-1) 	II	II
NOISE AND VIBRATION INFORMATION (Measured values determined according to EN 60745.)		
Noise emission		
A-weighted sound pressure level L _{pA}	91 dB (A)	91 dB (A)
Uncertainty K _{pA}	3 dB	3 dB
A-weighted sound power level L _{WA}	102 dB (A)	102 dB (A)
Uncertainty K _{WA}	3 dB	3 dB



Wear hearing protection!

Vibration emission*

Total vibration values (vector sum in the three axes) determined according to EN 60745:

Grinding concrete

Vibration emission value a _h	6.0 m/s ²	6.0 m/s ²
Uncertainty K	2.0 m/s ²	2.0 m/s ²

* The vibration emission values are determined according to 6.2.7 EN 60745-1.

The vibration emission level given in this information sheet has been measured in accordance with a standardised test given in EN 60745 and may be used to compare one tool with another. It may be used for a preliminary assessment of exposure.

The declared vibration emission level represents the main applications of the tool. However if the tool is used for different applications, with different accessories or poorly maintained, the vibration emission may differ. This may significantly increase the exposure level over the total working period.

An estimation of the level of exposure to vibration should also take into account the times when the tool is switched off or when it is running but not actually doing the job. This may significantly reduce the exposure level over the total working period.

Maintain the power tool and the accessories and keep your hands warm during operation to reduce the harmful effect of vibrations.

Dust from material such as paint containing lead, some wood species, minerals and metal may be harmful. Contact with or inhalation of the dust may cause allergic reactions and/or respiratory diseases to the operator or bystanders. Certain kinds of dust are classified as carcinogenic such as oak and beech dust especially in conjunction with additives for wood conditioning (chromate, wood preservative). Material containing asbestos must only be treated by specialists.

- Where the use of a dust extraction device is possible it shall be used.
- To achieve a high level of dust collection, use vacuum cleaner for wood or for wood and/or minerals together with this tool.
- The work place must be well ventilated.
- The use of a dust mask of filter class P2 is recommended.

Follow national requirements for the materials you want to work with.

All models are equipped with electronic device for soft start and restriction of starting current to 16 A. Models feature safety upon mains drop-out. In case of mains drop-out or unplugging for more than 0.5 s the power tool remains switched off and can be started only after switching off and on the ON/OFF switch. (This safety feature is described in part "Operation".)

General power tool safety warnings



WARNING! Read all safety warnings and all instructions. Failure to follow the warnings and instructions may result in electric shock, fire and/or serious injury.

Save all warnings and instructions for future reference.

The term "power tool" in the warnings refers to your mains-operated (corded) power tool or battery-operated (cordless) power tool.

1. WORK AREA SAFETY

- a) Keep work area clean and well lit. Cluttered or dark areas invite accidents.
- b) Do not operate power tools in explosive atmospheres, such as in the presence of flammable liquids, gases or dust. Power tools create sparks which may ignite the dust or fumes.
- c) Keep children and bystanders away while operating a power tool. Distractions can cause you to lose control.

2. ELECTRICAL SAFETY

- a) Power tool plugs must match the outlet. Never modify the plug in any way. Do not use any adapter plugs with earthed (grounded) power tools. Unmodified plugs and matching outlets will reduce risk of electric shock.
- b) Avoid body contact with earthed or grounded surfaces, such as pipes, radiators, ranges and refrigerators. There is an increased risk of electric shock if your body is earthed or grounded.
- c) Do not expose power tools to rain or wet conditions. Water entering a power tool will increase the risk of electric shock.
- d) Do not abuse the cord. Never use the cord for carrying, pulling or unplugging the power tool. Keep cord away from heat, oil, sharp edges or moving parts. Damaged or entangled cords increase the risk of electric shock.
- e) When operating a power tool outdoors, use an extension cord suitable for outdoor use. Use of a cord suitable for outdoor use reduces the risk of electric shock.
- f) If operating a power tool in a damp location is unavoidable, use a residual current device (RCD) protected supply. Use of an RCD reduces the risk of electric shock.

3. PERSONAL SAFETY

- a) Stay alert, watch what you are doing and use common sense when operating a power tool. Do not use a power tool while you are tired or under the influence of drugs, alcohol or medication. A moment of inattention while operating power tools may result in serious personal injury.

- b) Use personal protective equipment. Always wear eye protection. Protective equipment such as dust mask, non-skid safety shoes, hard hat, or hearing protection used for appropriate conditions will reduce personal injuries.
- c) Prevent unintentional starting. Ensure the switch is in the off-position before connecting to power source and/or battery pack, picking up or carrying the tool. Carrying power tools with your finger on the switch or energising power tools that have the switch on invites accidents.
- d) Remove any adjusting key or wrench before turning the power tool on. A wrench or a key left attached to a rotating part of the power tool may result in personal injury.
- e) Do not overreach. Keep proper footing and balance at all times. This enables better control of the power tool in unexpected situations.
- f) Dress properly. Do not wear loose clothing or jewellery. Keep your hair, clothing and gloves away from moving parts. Loose clothes, jewellery or long hair can be caught in moving parts.
- g) If devices are provided for the connection of dust extraction and collection facilities, ensure these are connected and properly used. Use of dust collection can reduce dust-related hazards.

4. POWER TOOL USE AND CARE

- a) Do not force the power tool. Use the correct power tool for your application. The correct power tool will do the job better and safer at the rate for which it was designed.
- b) Do not use the power tool if the switch does not turn it on and off. Any power tool that cannot be controlled with the switch is dangerous and must be repaired.
- c) Disconnect the plug from the power source and/or the battery pack from the power tool before making any adjustments, changing accessories, or storing power tools. Such preventive safety measures reduce the risk of starting the power tool accidentally.
- d) Store idle power tools out of the reach of children and do not allow persons unfamiliar with the power tool or these instructions to operate the power tool. Power tools are dangerous in the hands of untrained users.
- e) Maintain power tools. Check for misalignment or binding of moving parts, breakage of parts and any other condition that may affect the power tool's operation. If damaged, have the power tool repaired before use. Many accidents are caused by poorly maintained power tools.
- f) Keep cutting tools sharp and clean. Properly maintained cutting tools with sharp cutting edges are less likely to bind and are easier to control.
- g) Use the power tool, accessories and tool bits etc. in accordance with these instructions, taking into account the working conditions and the work to be performed. Use of the power tool for operations different from those intended could result in a hazardous situation.

5. SERVICE

- a) **Have your power tool serviced by a qualified repair person using only identical replacement parts.** *This will ensure that the safety of the power tool is maintained.*

Concrete grinder safety warnings



WARNING: Before connecting a tool to a power source be sure that the voltage supply is the same as that specified on the nameplate of the tool.

- A power source with a voltage greater than that specified for the tool can result in serious injury to the user, as well as damage to the tool.
- If in doubt, do not plug in the tool.
- Using a power source with a voltage less than the nameplate rating is harmful to the motor.



Always wear eye and ear protection and use a dust mask. The dust and abrasive particles separated during operation may seriously injure your health.

- **Hold power tool by insulated gripping surfaces only, when performing an operation where the cutting accessory may contact hidden wiring or its own cord.** *Cutting accessory contacting a "live" wire may make exposed metal parts of the power tool "live" and could give the operator an electric shock.*



WARNING: Always switch off and unplug the power tool prior to any adjustment, servicing or maintenance.

- Never switch on the grinder under load, and leave it down only after final rotation stop.
- Always keep the cord away from the working area of the cup wheel.
- Fasten the cup wheel only by a special wrench, using the original base support washer and lock nut.
- Do not use damaged cup wheels.



WARNING: The grinding accessory continues rotation even after the machine is switched off.

- Never apply side pressure to stop the cup wheel rotation after switching off the grinder.
- The outer metal parts and the bits may get hot after continuous operation.
- Use clamps or a vice to secure your work whenever possible.
- Always switch off the machine and wait until the spindle has come to a complete standstill before placing it down.
- Do not force the machine: let the tool do the work at a reasonable speed. Overloading will occur if too much

pressure is applied and the motor slows resulting in inefficient work and possible damage to the motor.

- Rags, cloths, cord, string and the like should never be left around the work area.
- Remove any nails, screws, etc. from the processed surface.
- Before using the tool on an actual work piece, switch on and let it run for a while. Operate the tool at least 200 mm away from your face and body.
- Always be sure you have a firm footing. Be sure no one is below when using the tool in high locations.
- Hold the power tool firmly.
- Keep your hands away from rotating parts. Do not touch the bit or the work piece immediately after operation - they may be extremely hot and you may get serious burns.
- The tool must be used only for its prescribed purpose. Any use other than those mentioned in this Manual will be considered a case of misuse. The user and not the manufacturer shall be liable for any damage or injury resulting from such cases of misuse.
- To use this tool properly, you must observe the safety regulations, the assembly instructions and the operating instructions found in this Manual. All persons who use and service the machine have to be acquainted with this Manual and must be informed about its potential hazards. Children and frail people must not use this tool. Children should be supervised at all times if they are in the area in which the tool is being used. It is also imperative that you observe the accident prevention regulations in force in your area. The same applies for general rules of occupational health and safety.
- The manufacturer shall not be liable for any changes made to the tool nor for any damage resulting from such changes.

Even when the tool is used as prescribed it is not possible to eliminate all residual risk factors. The following hazards may arise in connection with the tool's construction and design:

- Damage to hearing if effective hearing protection is not worn.
- Always unplug the machine prior to any adjustment, servicing or maintenance including replacing the accessories.
- The power tools must not be used outdoors in rainy weather, or in moist environment (after rain) or in close vicinity with easily flammable liquids and gases. The working place should be well lit.

Know your product

Before using the power tool, familiarize yourself with all the operating features and safety requirements. Use the tool and accessories only for the applications intended. All other applications are expressly ruled out.

1. Spindle
2. Wheel guard
3. Base support washer
4. Diamond cup wheel
5. Flat support washer
6. Lock nut

7. ON/OFF switch
8. Spindle lock button
9. Brush shield
10. Fastening bracket
11. Auxiliary handle
12. Lock nut wrench
13. Screw

Operation

This power tool is supplied from single-phase alternating current mains only. It is double insulated according to EN 60745-1, IEC 60745 and can be connected to grounded or not grounded sockets. This power tool is radio suppressed in compliance with EMC Directive 2004/108/EC.

This power tool is designed for rough and fine grinding concrete and rock material with the purpose of refurbishing before laying plaster and protective coating. The machine is designed for dry grinding only.

PRIOR TO INITIAL OPERATION

- The machine may be delivered with the wheel mounted at the factory. Ensure that the wheel is mounted properly and fixed reliably prior to the initial and any following operation.
- Make sure the power supply voltage corresponds to the value indicated on the name plate with technical data of the tool.
- Always check the position of ON/OFF switch. The power tool must be connected to the power supply socket only when this switch is in OFF position.
- Make sure that the cord and the plug are in order. If the replacement of the supply cord is necessary, this has to be done by the manufacturer or his agent in order to avoid a safety hazard.



WARNING: Always switch off and unplug the power tool prior to any adjustment, servicing or maintenance.

- Always use the auxiliary handle and hold the machine firmly with both hands for maximum control over torque reaction or kickback upon starting. (Fig. 1)

SWITCHING ON - SWITCHING OFF

Before plugging in the tool, always check to see that the switch trigger actuates properly and returns to the "OFF" position when released.

1. To switch on: Push the slider of the switch slider (7) forward until its front end sags thus fixing itself. (Fig. 2)
2. To switch off: Press the back lifted end of the switch slider (7) and release it in order to move back in its initial position. (Fig. 3)

ELECTRONIC DEVICE

This power tool is equipped with an electronic device featuring:

- Safety upon mains drop-out: In case of mains drop-out (or temporary drop-out for time $t > 0,5$ s), when the ON/OFF switch is in ON position, the machine should

not operate after supply recovering. To start operating the machine, first switch off and then switch on the lever of ON/OFF switch.

- Soft start and overload protection: This feature ensures starting without jerks and prevents origination of supply voltage fluctuations;
- Virtually constant speed under wide range of loads;
- Brief overload protection: Upon major brief overloads a current overload protection actuates, which reduces harshly the rotation speed. To resume normal operation withdraw the machine from the material.
- Thermal overload protection: Upon minor long overloads, the thermal overload protection actuates. The electronic device switches the machine off before the temperature reaches critical value. The normal operation is disabled. After cooling down for 3-5 minutes the machine can be operated again. To resume operation switch the trigger off and on again.

WHEEL GUARD

The wheel guard (2) must always be mounted on the machine!

ASSEMBLY, REPLACING AND ADJUSTING THE CUP WHEEL POSITION

Make sure the cup wheel diameter and thickness do not exceed the values stated in the technical specifications. The maximum admissible speed indicated on the wheel must not be less than the machine no load speed.

Fix the spindle (1) by pressing the lock button (8) on the gear case.



WARNING: Never press button (8) while the spindle is still rotating!

With this button depressed turn the spindle till its pronounced going deeper. Unscrew lock nut (6) by the lock nut wrench (12).

In view of the cup wheel wear and in order to achieve optimum dust extraction a possibility is provided to adjust the cup wheel position to the wear of the cup wheel.

When placing a new cup wheel arrange the components on the spindle in the following order: base support washer (3); cup wheel (4); lock nut (6) with its flat end towards the cup wheel as shown on Fig. 4.



WARNING: Placing the lock nut (6) with its convex end towards the cup wheel shall make tightening the cup wheel impossible.

In case the cup wheel is half worn out or more, arrange the components on the spindle in the following order: flat support washer (5); cup wheel (4); lock nut (6) with its convex end towards the cup wheel as shown on Fig. 5.



WARNING: Placing the lock nut with its flat end towards the cup wheel shall obstruct centring the cup wheel thus causing excessive vibration and may result in personal injury.



WARNING: After replacing the wheel, operate the machine with the new wheel at no load mode for minimum 30 seconds. Vibrating or otherwise improperly rotating wheels must be replaced immediately and discarded.

In case of changing the cup wheel position adjust it or replace the brush shield if necessary.

ADJUSTING (REPLACING) THE BRUSH SHIELD POSITION

The brush shield (9) ensures decreasing the dust emission in the environment to the utmost. The brush shield wears out along with the wheel. When replacing the wheel if necessary change the brush as well. Loosen the screw in bracket (10) and remove the old brush. Place the new brush, taking care that the edge of the wheel guard (2) contacts the brush rib. Place the bracket (10) back and fasten it.

AUXILIARY HANDLE

The auxiliary handle (11) is fastened to the gear case through two screws. Always use the auxiliary handle and hold the machine firmly with both hands. (Fig. 1)

DUST EXTRACTION

This power tool should only be used with a dust extraction system. In addition, always wear approved dust mask. Always make sure the vacuum cleaner that you use is designed for extraction of masonry dust. Connect the vacuum cleaner to the dust extraction port on the wheel guard.

RECOMMENDATIONS

When grinding do not apply pressure to the processed surface by bearing down on the machine but move the wheel smoothly. Upon overloading the built-in electronic protection will actuate and the speed of the wheels will be reduced considerably.

To resume normal speed draw the machine back from the processed material. Use the appropriate type of wheel for the specific operation and the material. In case the screws (13) loosen they have to be tightened firmly. Prior to tightening you must lay thread locking adhesive over each screw thread.

ACCESSORIES TO BE USED WITH THIS POWER TOOL

Diamond cup wheel Ø125 x Ø22.23 x 22 mm

WARNING! These accessories or attachments are recommended for use with your TRELAWNY tool specified in this manual. The use of any other accessories or attachments might present a risk of injury to persons. Only use accessory or attachment for its stated purpose. If you need any assistance for more details regarding these accessories, ask your local TRELAWNY service centre.

Maintenance



WARNING: Always ensure that the tool is switched off and unplugged before attempting to perform inspection or maintenance.

BRUSH REPLACEMENT

This power tool is equipped with auto-stop brushes. When the carbon brushes are worn out, the machine switches itself off. In this case both brushes must be replaced simultaneously with genuine brushes at TRELAWNY service centre for warranty and post-warranty service.

GENERAL INSPECTION

Regularly inspect all fasteners and ensure they are properly tightened. Should any of the screws be loose, retighten it immediately to avoid hazards.

In case the screws (13) loosen they have to be tightened firmly. Prior to tightening you must lay thread locking adhesive over each screw thread.

Re-lubricate all moving parts at regular intervals.

If the replacement of the supply cord is necessary, this has to be done by the manufacturer or his agent in order to avoid a safety hazard.

CLEANING

For safe operation always keep the machine and its ventilation slots clean.

Regularly check to see if any dust or foreign matter has entered the grills near the motor and around the switches. Use a soft brush and/or air jet to remove any accumulated dust. Wear safety glasses to protect your eyes whilst cleaning.

Exterior plastic parts may be cleaned with a damp cloth and mild detergent if necessary.



WARNING: Never use alcohol, petrol or other cleaning agent. Never use caustic agents to clean plastic parts.



WARNING: Water must never come into contact with the tool.

IMPORTANT! To assure product safety and reliability, repairs, maintenance and adjustment (including brush inspection and replacement) should be performed by certified service centres or other qualified service organisations, always using genuine replacement parts.

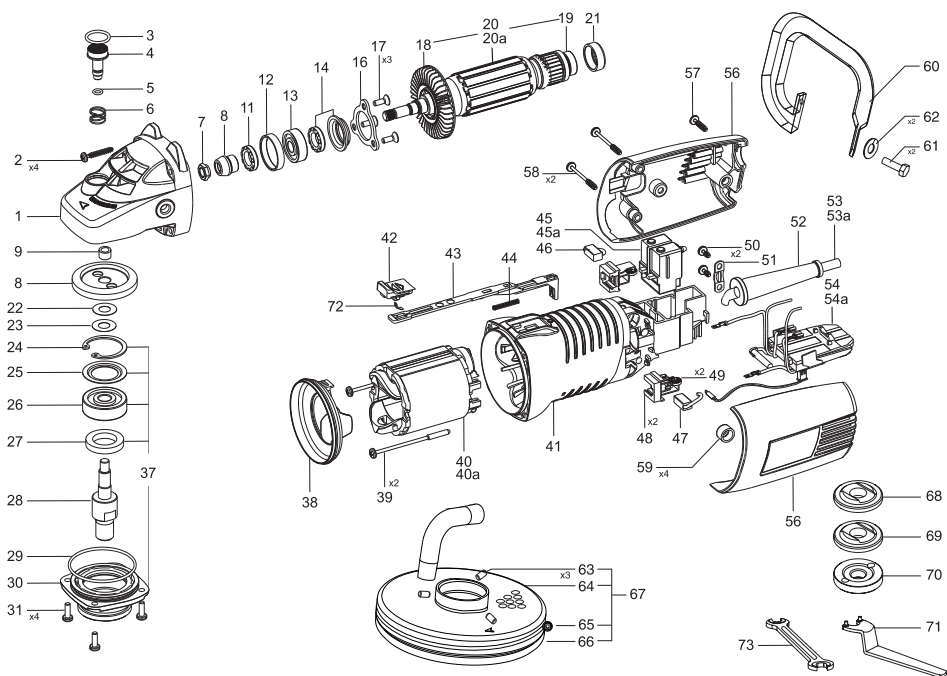
Notes

Carefully read the entire Original Instructions before using this product.

The manufacturer reserves the right to make changes and improvements to the products and to alter specifications without prior notice.

Specifications may differ from country to country.

TCG 125L • TCG 125



TCG 125L • TCG 125

Pos. No.	Ref.No.	Description
1	540.147747	Gear box HD
2	540.361366	Screw K 4X25 TORX 20
3	540.330335	O-ring 16X2B
4	540.117795	Lock button
5	540.330704	O-ring 5x1,5 NBR 70
6	540.115165	Spring
7	540.117800	Nut M8x1
8	540.158636	Gear set 3,44
9	540.933756	Bearing HK0709
11	540.157335	Gasket 13,5
12	540.156478	Rubber bush
13	540.331437	Bearing 629 2RSL P63 LDS 18SpA
14	540.157339	Profile washer set
16	540.157311	Bearing cover
17	540.360673	Screw M4X12
18	540.152579	Fan
19	540.331509	Bearing 626 2RSL
20	540.157320	Armature set
20a	540.145665	Armature set
21	540.129087	Elastic sleeve
22	540.117798	Spacer washer
23	540.117799	Spacer washer
24	540.330732	Circlip A35-1D
25	540.113091	Spacer washer
26	540.331622	Bearing 6300-2RS (10x35x11)
27	540.153586	Felt 30x19.2x6
28	540.153921	Spindle
29	540.330336	O-ring 50X2B
30	540.158260	Bearing bed HD
31	540.361131	Screw H2-M4x12
37	540.158261	Bearing bed set HD
38	540.157299	Diffuser L 50-55
39	540.361430	Screw 3.9x69
40	540.159064	Stator set HD
40a	540.145664	Stator set HD

Pos. No.	Ref.No.	Description
41	540.159403	Body L50-55
42	540.159392	Button
43	540.157300	Guiding switch lever L
44	540.146782	Pressure spring 0,4x4x25
45	540.102100	Switch PS8
45a	540.153548	Switch APB-2114 Defond
46	540.153056	Brush
47	540.153057	Brush with a switch
48	540.129082	Brush holder set
49	540.254364	Spiral spring
50	540.361360	Screw K 4X9.5 TORX 20
51	540.256500	Cord clamp
52	540.152759	Cord protector
53	540.145129	Cord with a plug
53a	540.174306	Cord with a plug 16A/110V
54	540.159098	Electronic block
54a	540.145660	Electronic block
56	540.159417	Couple cover set
57	540.361328	Screw K4x18 TORX 20
58	540.361367	Screw K 4X37/25 TORX 20
59	540.116757	Rubber bush
60	540.154699	Auxiliary handle set
61	540.360396	Bolt D-2 M8X16
62	540.361086	Washer 1-8
63	540.361342	Screw M6X6 DIN 914
64	540.158266	Disk guard 52
65	540.154693	Internal wire
66	540.174411	Gasket
67	540.158265	Disk guard
68	540.152929	Back up disc washer
69	540.174267	Inner Flange
70	540.121838	Locking nut
71	540.150015	Special spanner 200
72	540.157990	Spring
73	540.146454	Spanner SW 13 DIN 894

Parts with "a" prefix related to TCG 125L

Tel: +44 (0)1926 883781
Fax: +44 (0)1926 450352



www.trelawnyspt.co.uk
Email: sales@trelawny.co.uk

DECLARATION OF CONFORMITY

We,

Trelawny SPT Limited of
Trelawny House, 13 Highdown Road, Sydenham Industrial Estate, Leamington Spa,
Warwickshire, CV31 1XT, United Kingdom,

Declare that under our sole responsibility for supply/manufacture of the product

Name of product	CONCRETE GRINDER
Part Numbers	540.2010; 540.2020
Year of production	2014

to which this document related is in conformity with the provisions of the following Directive(s),
Normative Documents and their relevant Standards:

2006/42/EC	MACHINERY DIRECTIVE
2004/108/EC	DIRECTIVE OF ELECTROMAGNETIC COMPATIBILITY
2011/65/EC	RoHS DIRECTIVE

EN 60745-1, EN 55014-1, EN 55014, EN 61000-3-2, EN 61000-3-3

A handwritten signature in black ink, appearing to read "Rob Chapman".

Date and place of issue,
1st January 2014
Leamington Spa, England.

Rob Chapman,
Commercial Director.



Registered Office: Trelawny SPT Ltd, Trelawny House, 13 Highdown Road, Sydenham Industrial Estate, Leamington Spa, Warwickshire, CV31 1XT, United Kingdom



DOCUMENT No. Q:57/4